

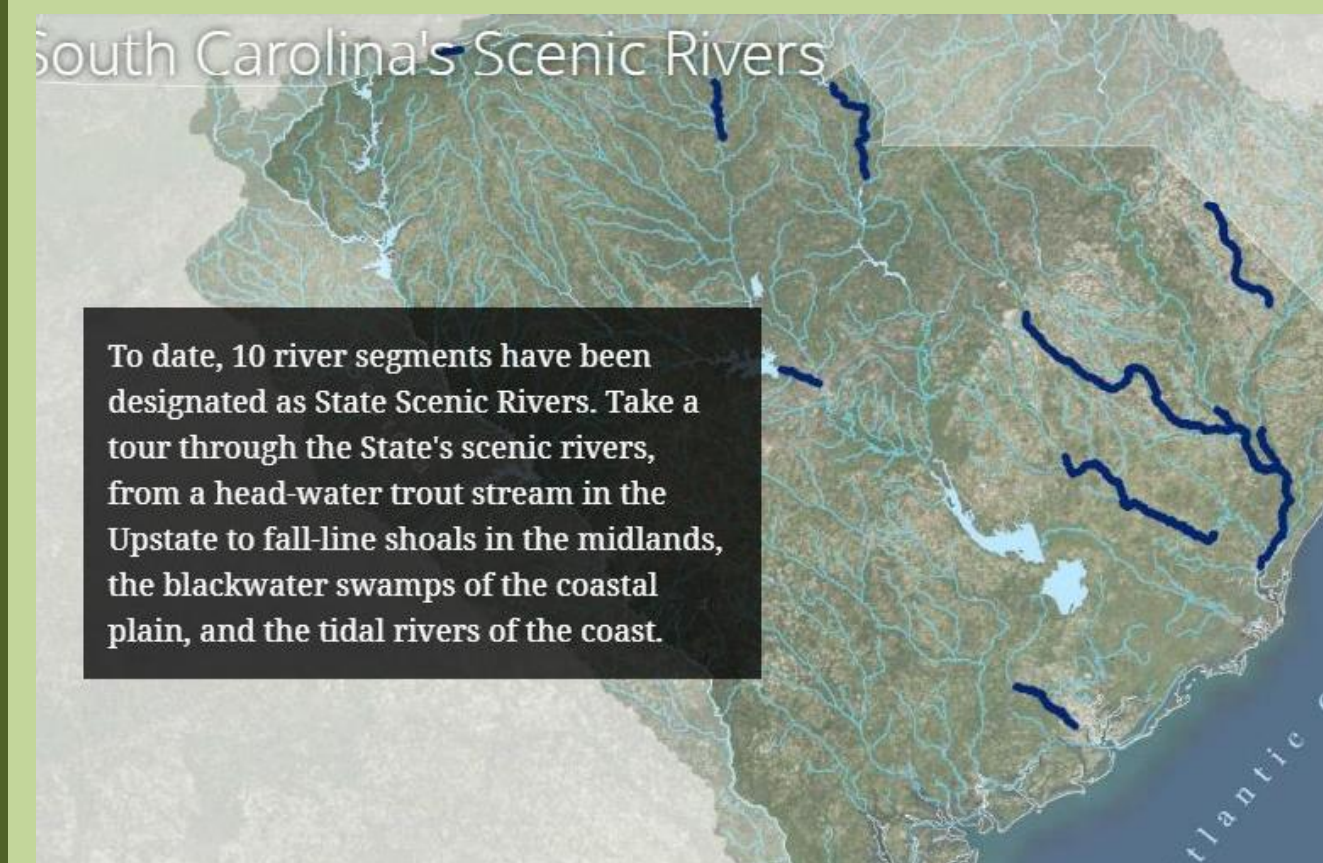


Geographic Information System Intern South Carolina's Department of Natural Resources – LWCD Megan James



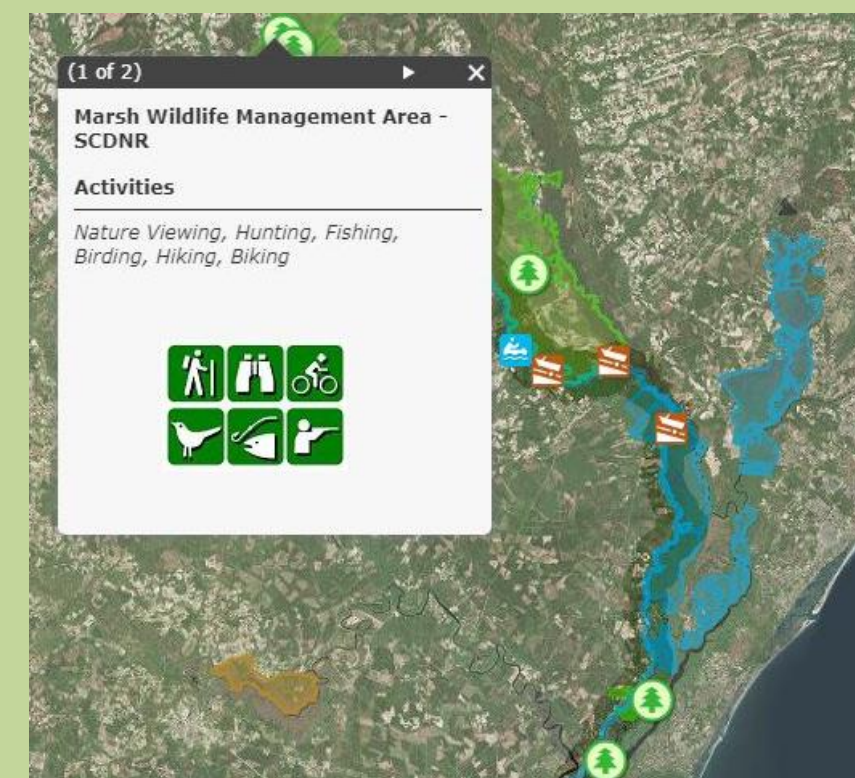
Story Maps

South Carolina Scenic Rivers



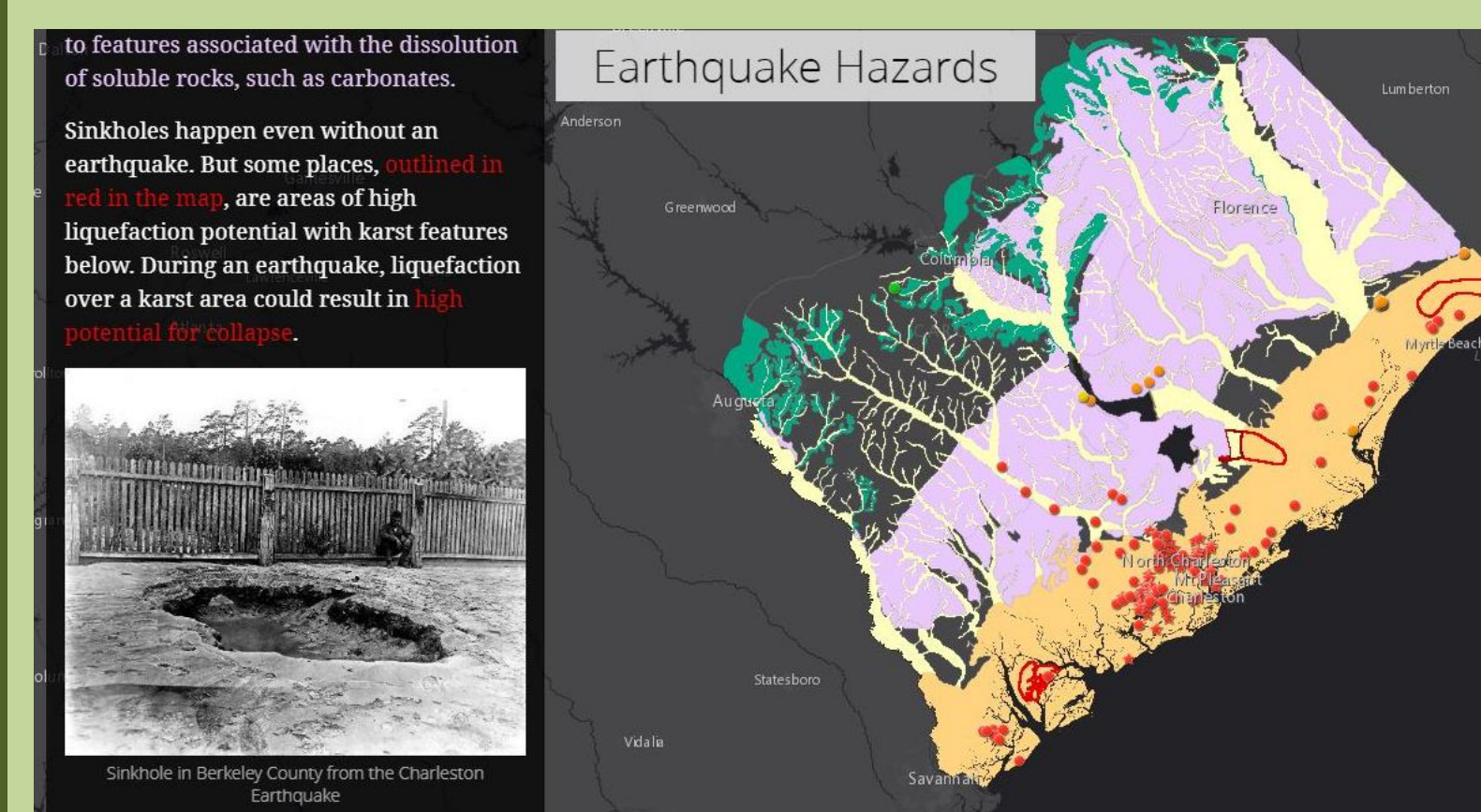
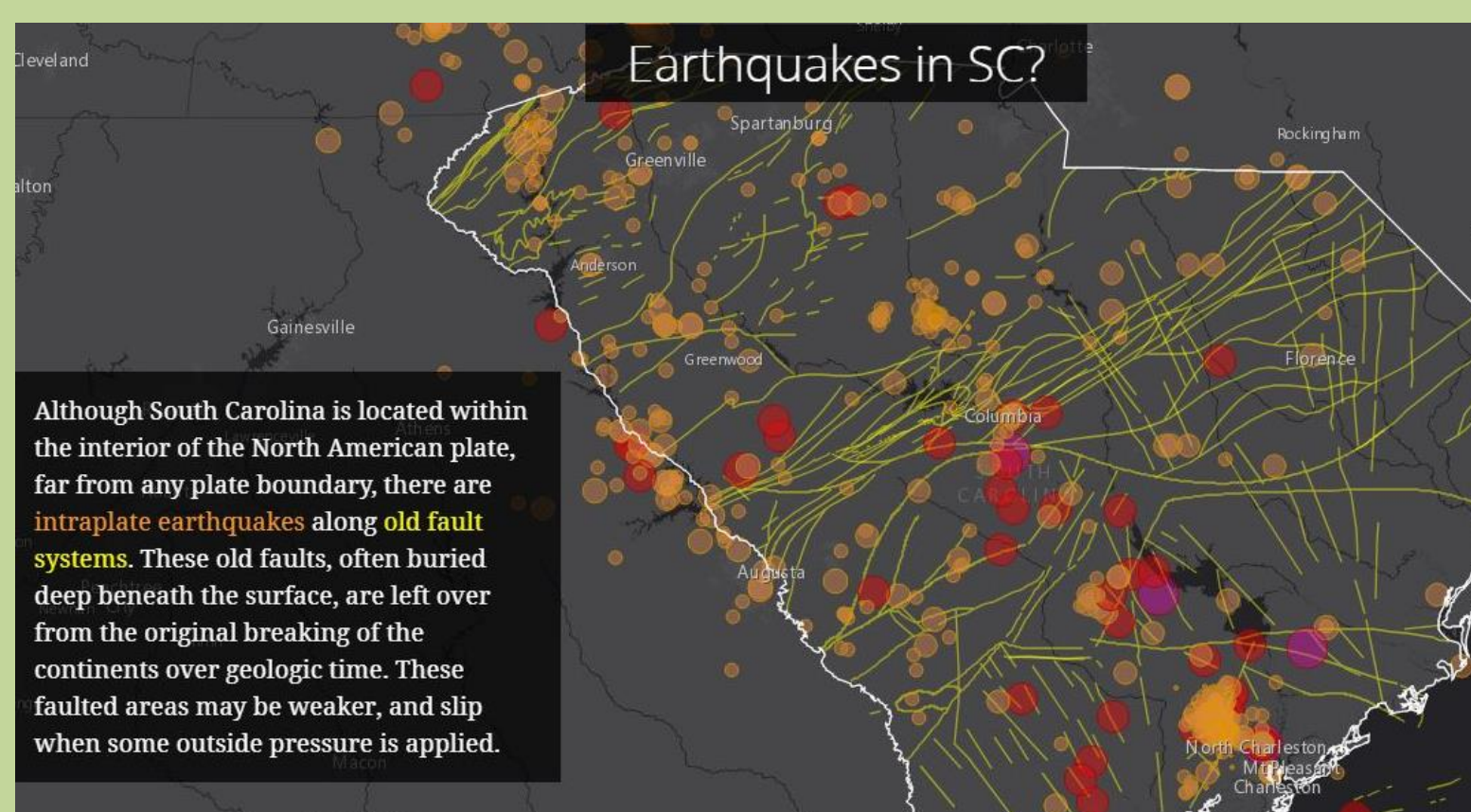
- Used ArcGIS to create points of interest maps
- Used ArcMap to create overview maps
- Used Esri Story Maps to create webpage

- Tells the history and current use of all ten scenic rivers
- Highlights parks, boat launches, historic sites, and other points of interest along the rivers



South Carolina Earthquakes

- Used ArcGIS to create all maps
- Used Esri Story Maps to create webpage

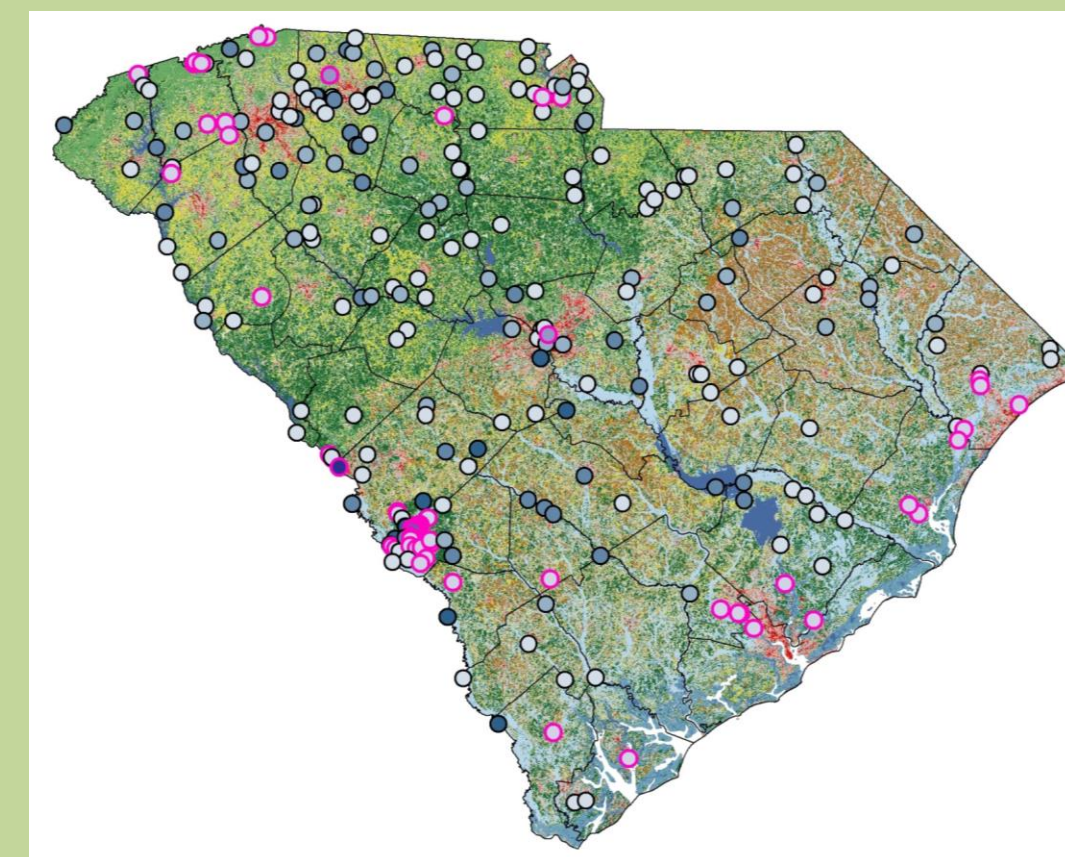


- Explains why and how earthquakes happen generally and in South Carolina
- Gives a brief history of the 1886 Charleston earthquake
- Details hazardous areas in South Carolina
- Describes ways one can prepare for an earthquake

Other Projects

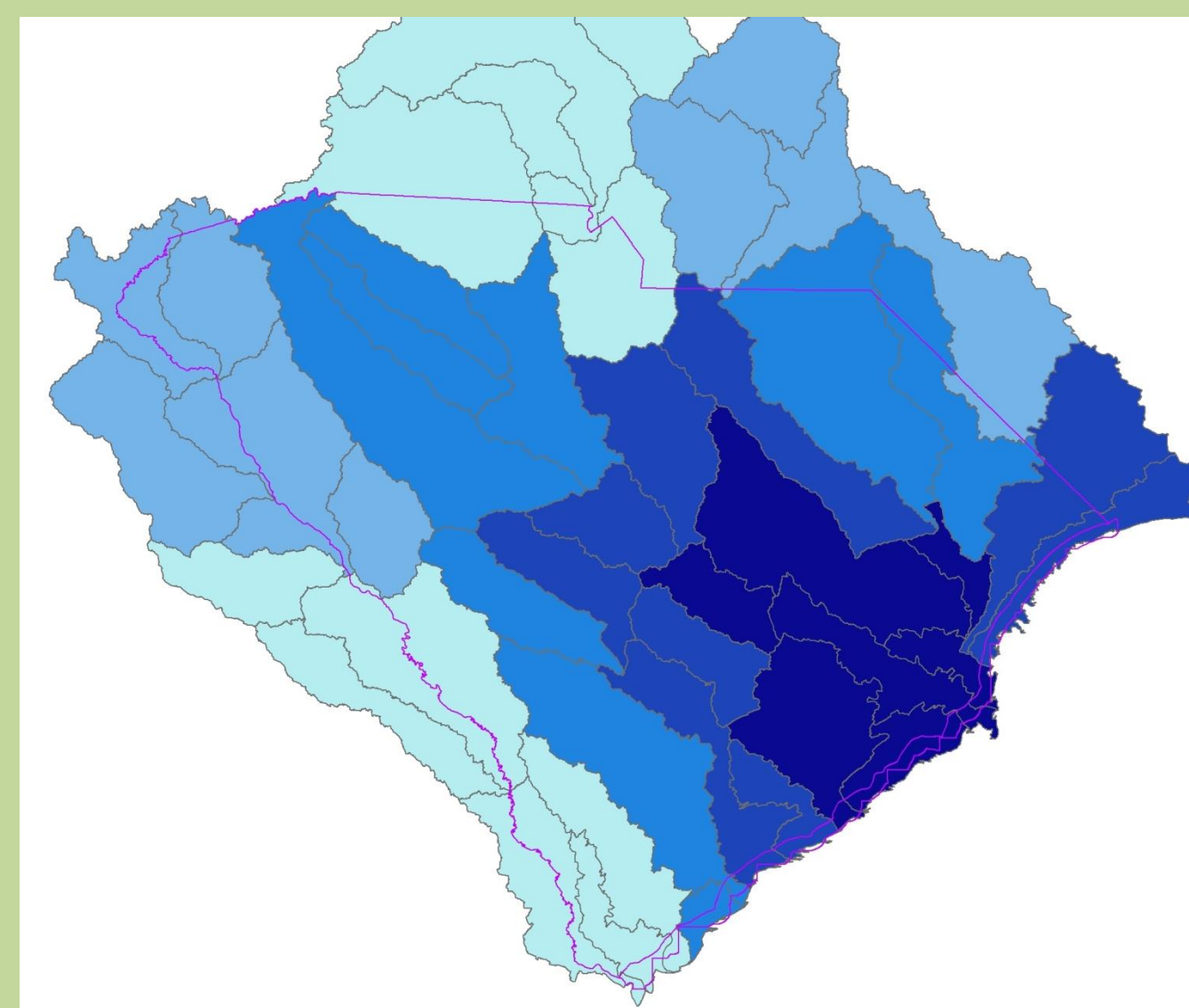
- Organization of information relating to geological quadrangle maps
- Compilation of land irrigated in South Carolina

Stream Flow Analysis



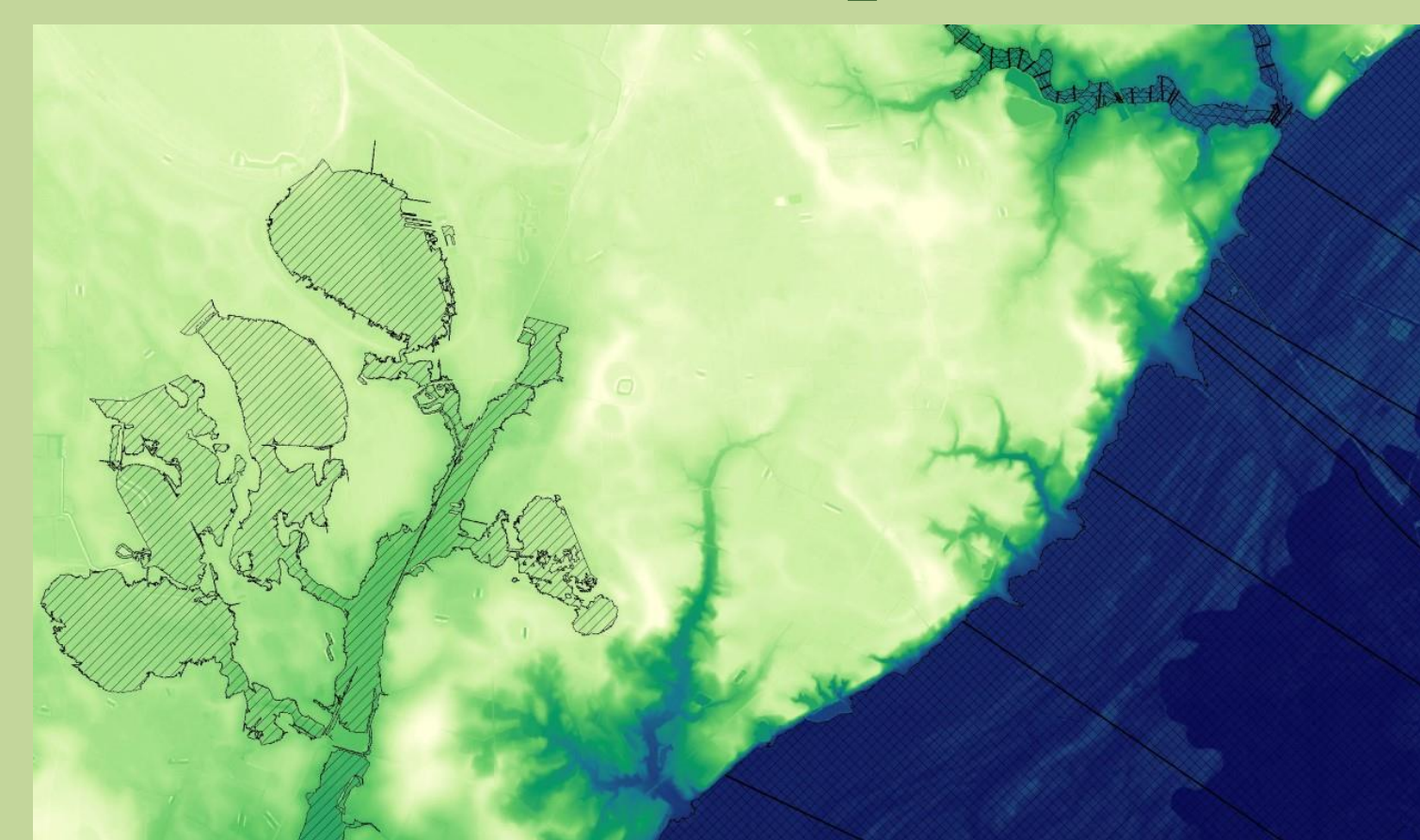
- Compiled and filtered stream flow data from active and inactive gages to find streams with the highest flow during the dry season, indicating a stronger influence from groundwater aquifers
- Used ArcMap to plot locations where streams are influenced heavily by groundwater
- Outlined points are considered to be urban and therefore data may be skewed

Precipitation Analysis



- ArcMap was used to find watersheds that received the most rainfall during the 2015, 2016, and 2018 storms

Floodplain Elevation



- ArcMap was used to evaluate sites for lowest elevation using LiDAR returns
- Determined if sites were in FEMA 100-year floodplain

Website Makeover



- Updated the hydrology & geology department websites using my training in HTML, CSS, and JavaScript
- Corrected broken links, changed older pictures, and organized content

After



SC Saltwater Paddling Trail



- ArcMap was used to input new access points and points of interest along coastal waterways
- The Paddle SC website was updated to include a new saltwater paddling trail

Acknowledgments

I would like to thank my supervisor, Tanner Arrington, for imparting a fraction of his vast knowledge to me. With his guidance, I have been able to shape skills learned in the classroom and during my internship into ones I will be able to use in my professional career. Thank you, Tanner!